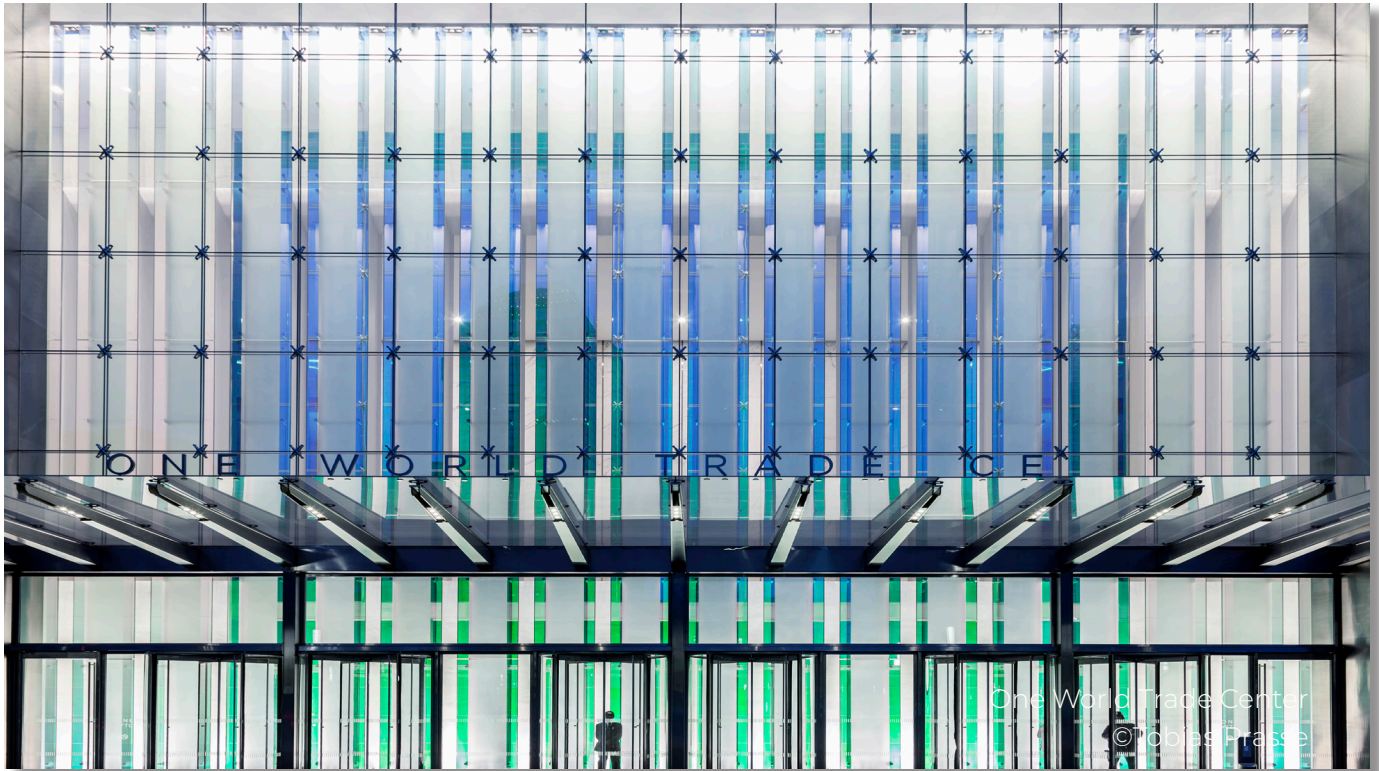




PRODUCT CATALOG

VETLANET SERIES



The VetraNet Series

Dynamic and minimalist, Sentech's VetraNet Systems offer optimally transparent solutions, using pre-tensioned cables to create an optical "net" effect. These systems can be designed using one or two-way cable arrangements on walls up to 100-feet tall. Inherently flexible, incredibly durable and resistant to high environmental loads, VetraNet facades efficiently transfer gravity, wind and seismic loads to the perimeter support structure.

These proprietary systems can be used to design flat or curved facades, multiple varieties of facade shapes and aspect ratios, as well as blast or bullet-resistant applications. The system is typically designed with all tempered glass types (coated-insulated, laminated, monolithic), enabling the highest performance through efficient load transfer, energy savings and maximum transparency.

-
- Fitting shape options: diamond, round, oval or custom
 - Fitting connection options: point or patch
 - 316 stainless steel construction
 - 1-way or 2-way cable arrangements
 - Maximum wall height for 1-way cables = 60'+
 - Recommended panel aspect ratio = 1 to 1.3
 - Recommended cable spacing = 6' to 8'
 - Use w/ all tempered glass types (insulated, laminated, monolithic)

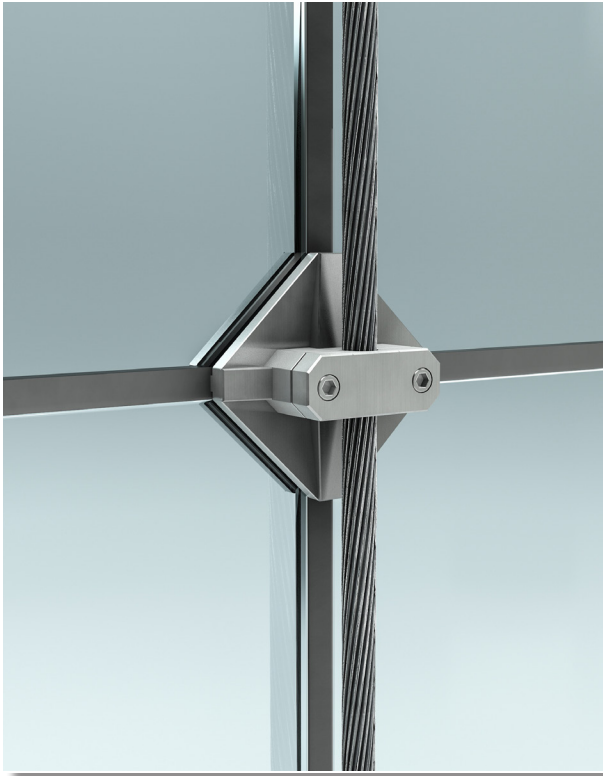


VetraNet B-Series

Sentech's VetraNet B-Series System is specifically designed for blast load applications. The demand for blast-resistant facades has increased in recent years, and this type of application helps mitigate the effects of explosives on buildings and the corresponding safety perimeters around those structures. The overarching goal in blast-resistant design philosophy is to minimize consequences to the structure and inhabitants in the event of an explosion.

The system can be used for walls up to 100' tall in two-way cable configurations, and on walls up to 60' tall in one-way cable arrangements. The VetraNet B-Series fittings are designed to be used with laminated glass and can be used for walls without curvature or in single curvature arrangements. The system allows each panel to be supported independently with the glass gravity loads transferred via setting blocks located at the center of the fitting.

-
- 316 stainless steel construction
 - 1-way or 2-way cable arrangements
 - Maximum wall height for 1-way cables = 60'
 - Maximum wall height for 2-way cables = 100'
 - Recommended panel aspect ratio = 1 to 1.3
 - Recommended cable spacing = 6' to 8'
 - Use w/ all tempered glass types (insulated, laminated, monolithic)



VetraNet P-Series

Sentech's VetraNet P-Series System is a patch fitting cable system that offers highly transparent solutions and ample design flexibility. The system can be used in one-way or two-way cable arrangements on walls up to 60' tall. The VetraNet P-Series fittings support each glass panel independently by using gravity shelves and a clamping action.

The key advantage of this glass support methodology is that the system can be used with any glass type, without drilling the glass, thus reducing manufacturing time and installation costs. To meet different aesthetic preferences, these fittings are offered in diamond, round, oval and custom shapes.

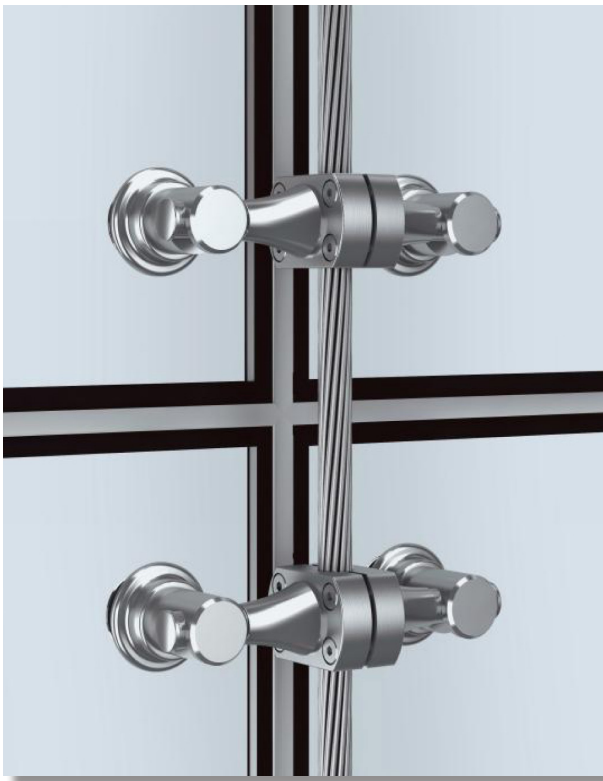
-
- Fitting shape options: diamond, round, oval or custom
 - Fitting connection options: point or patch
 - 316 stainless steel construction
 - 1-way or 2-way cable arrangements
 - Maximum wall height for 1-way cables = 60'
 - Recommended panel aspect ratio = 1 to 1.3
 - Recommended cable spacing = 6' to 8'
 - Use w/ all tempered glass types (insulated, laminated, monolithic)



VetraNet D-Series

Sentech's VetraNet D-Series System offers a highly efficient solution for insulated and laminated glass applications. The two-cable design results in cost efficient designs for tall facade applications and facades subjected to high loads.

- Fitting connection options: point or patch
- Patch fitting shape options: rectangular, round or custom
- 316 stainless steel construction
- 2-cable vertical arrangement
- Maximum wall height = 100'
- Recommended panel aspect ratio = 1 to 1.3
- Recommended cable spacing = 6' to 8'
- Use w/ insulated & laminated glass types



VetraNet S-Series

Sentech's VetraNet S-Series System is designed to enclose spaces requiring minimum structure. The system can be used for walls up to 60' tall using one-way cable arrangements. These fittings are designed to be used on walls with single-plane or single-curvature geometry. The system allows each panel to be supported independently; the glass gravity loads are transferred directly from the glass to the cables via the fitting connections.

- Fitting connection options: counter-sunk or patch
- 316 stainless steel construction
- 1-way cable arrangement
- Maximum wall height = 60'
- Recommended panel aspect ratio = 1 to 1.3
- Recommended cable spacing = 6' to 8'
- Use w/ all tempered glass types (insulated, laminated, monolithic)



PORT TRADE

» SENTECH
ARCHITECTURAL SYSTEMS